

THE WASHINGTON

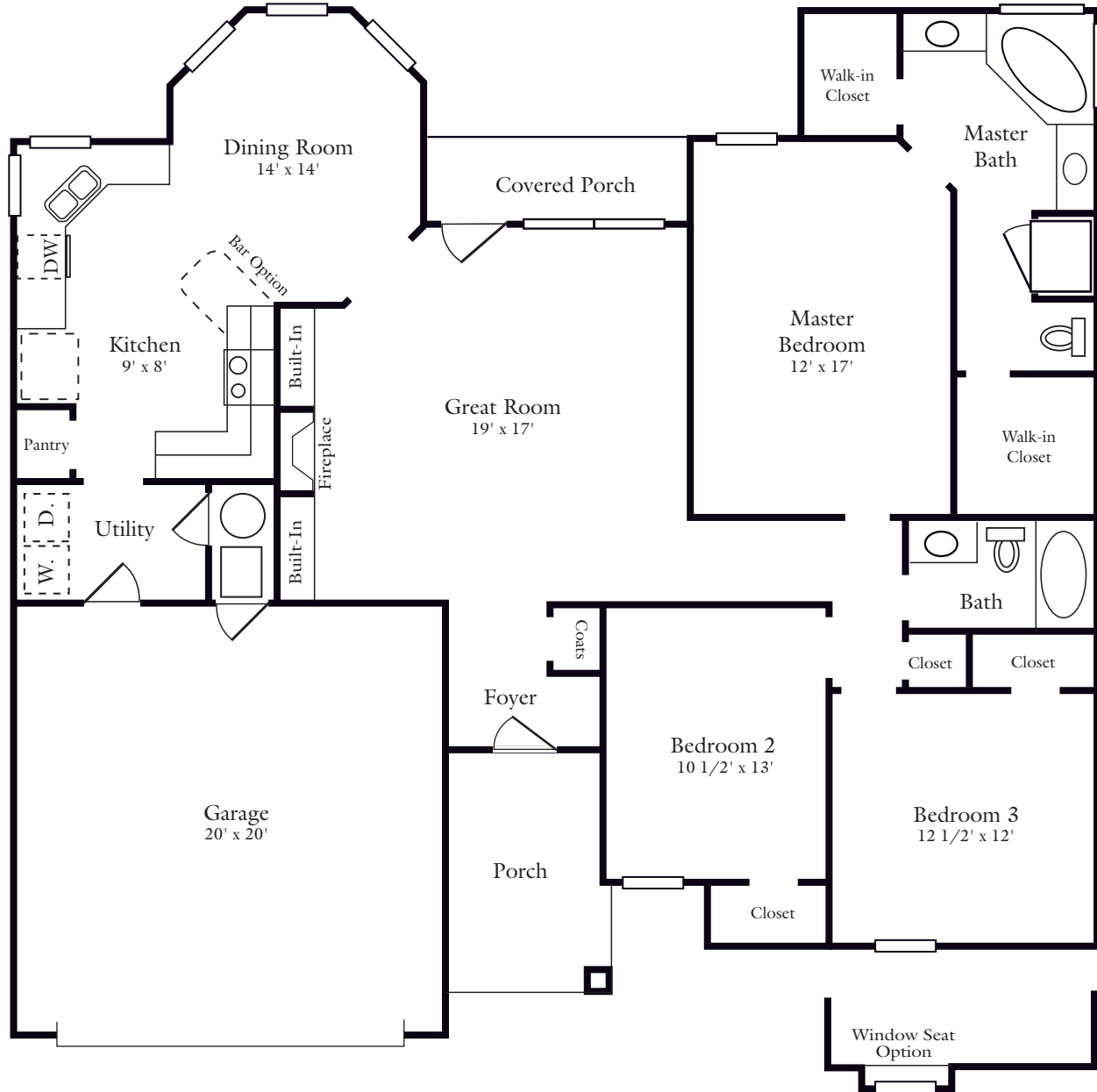
Plan 1650

A/C Floor Space
Garage and/or Storage
Covered Patio and/or Porch

1,650 Sq. Ft.
402 Sq. Ft.
125 Sq. Ft.

Also available in A/C Floor Space

1785 Sq. Ft.



JIMMY BELL REAL ESTATE COMPANY

Northridge Branch Office:
309 Boulder Drive (8 Mi. North of I-40)
Van Buren, AR 72956
479-471-9200
fax 471-9222

Main Office:
1031 Fayetteville Rd.
Van Buren, AR 72956
479-474-9200
fax 474-3909

Harold **Hamm**
Quality Homes
"Built with Honesty & Integrity"

All floor plans and exterior renderings are artist's conceptions. Plan does not represent footage of home. All dimensions are approximate and subject to change. Actual dimensions will vary.

THE WASHINGTON

Plan 1650



Elevation A



Elevation B



Elevation C