

THE TRUMAN

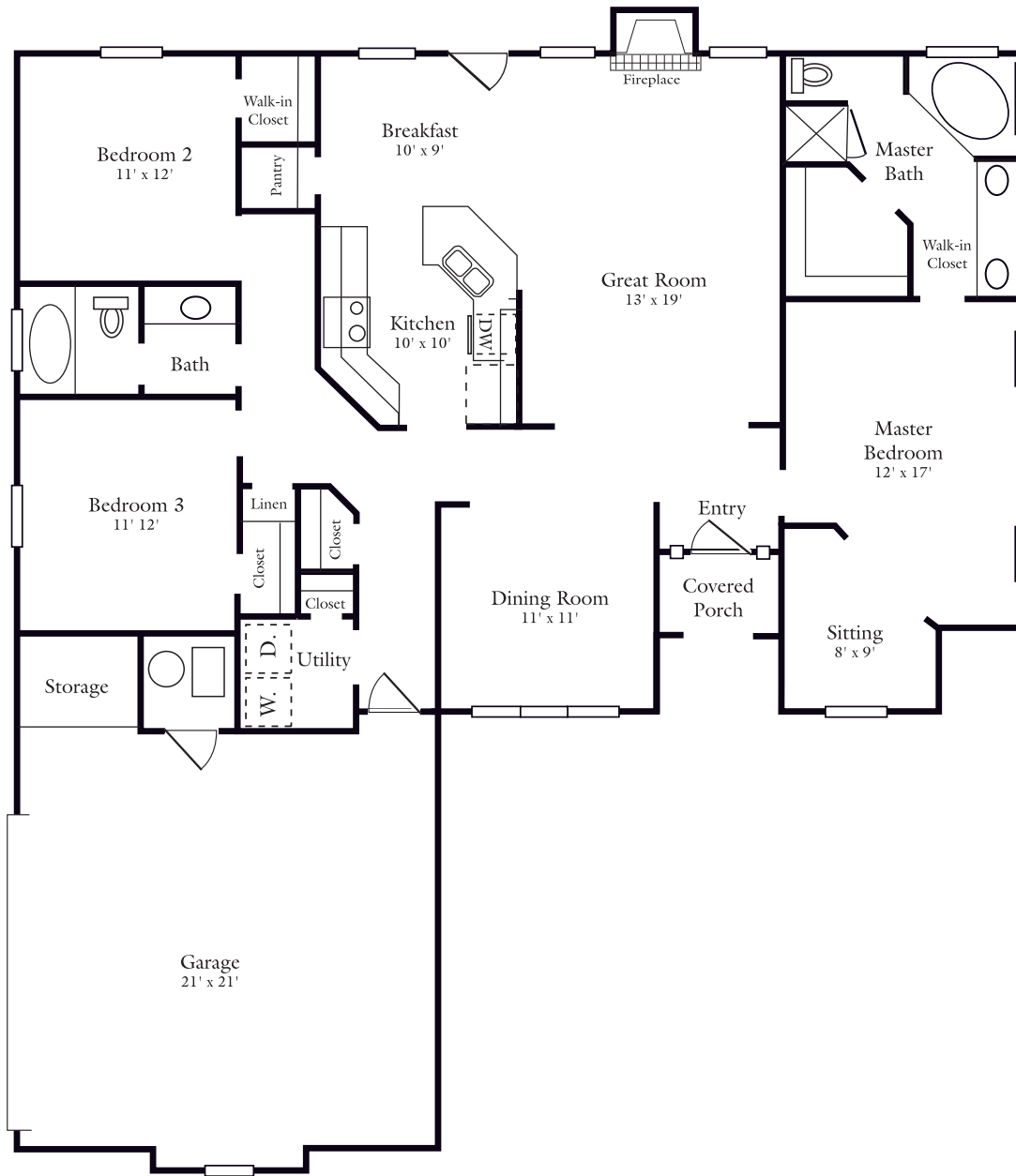
Plan 1665

A/C Floor Space
Garage and/or Storage
Covered Patio and/or Porch

1,665 Sq. Ft.
441 Sq. Ft.
30 Sq. Ft.

Also available in A/C Floor Space

1760 Sq. Ft.
1867 Sq. Ft.



JIMMY BELL REAL ESTATE COMPANY

Northridge Branch Office:
309 Boulder Drive (.8 Mi. North of I-40)
Van Buren, AR 72956
479-471-9200
fax 471-9222

Main Office:
1031 Fayetteville Rd.
Van Buren, AR 72956
479-474-9200
fax 474-3909

RUCKER
FINE HOMES

TIM MAYS
HOMEBUILDER
3rd Generation of Quality

Harold Hamm
Quality Homes
"Built with Honesty & Integrity"

All floor plans and exterior renderings are artist's conceptions. Plan does not represent footage of home. All dimensions are approximate and subject to change. Actual dimensions will vary.

THE TRUMAN

Plan 1665



Elevation A



Elevation B



Elevation C